

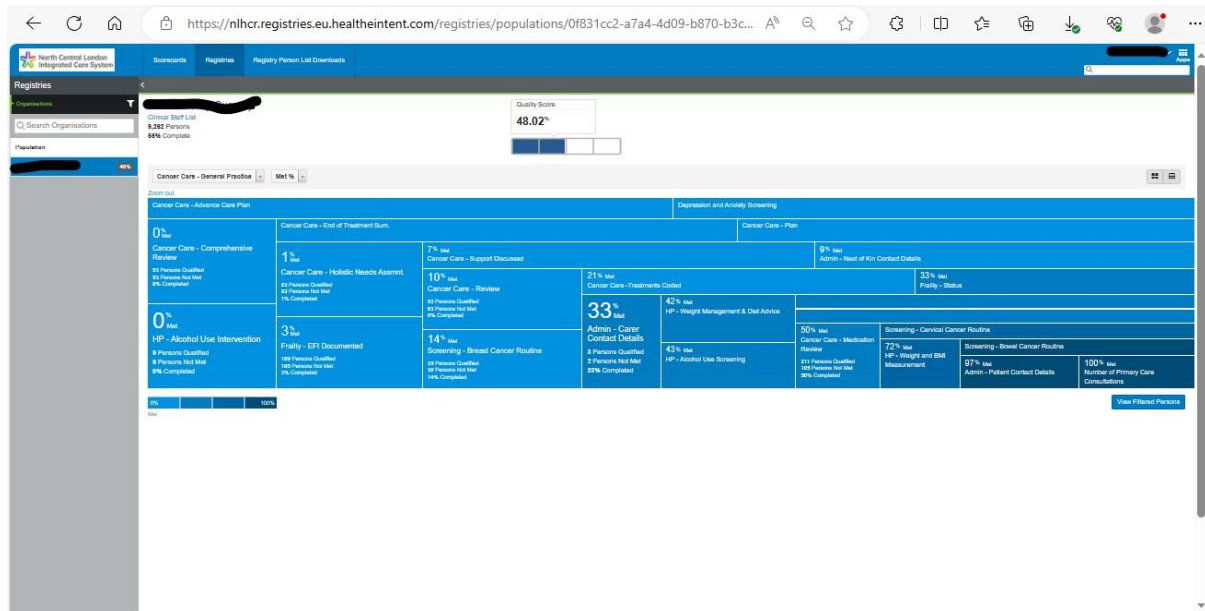
Instructions and data sheet for Registry and QOF data collection

Overall measures to report:

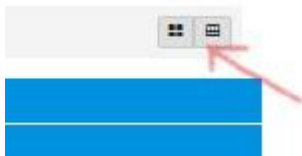
METRICS	SOURCE
Overall quality indicator data completion	Cancer Care Registry data
Overall QOF scoring across cancer metrics	EMIS Web - Population reporting - Cancer QOF data

How to submit your data on your quality indicator completion rate:

Enter the registry and go to surgery population view



Select table view to get QI the list of the quality indicators:



Registries

Quality Score: 48.02%

Clinical Staff List
9,262 Persons
56% Complete

Cancer Care - General Practice

Message	Met %	Completion %	Persons/Events Qualified	Persons/Events Not Met
Cancer Care - Plan	0%	0%	93	93
Cancer Care - End of Treatment Sum	0%	0%	188	188
HP - Alcohol Use Intervention	0%	0%	9	9
Cancer Care - Comprehensive Review	0%	0%	93	93
Depression and Anxiety Screening	0%	0%	172	171
Cancer Care - Advance Care Plan	0%	0%	211	209
Cancer Care - Holistic Needs Assessm	1%	1%	93	92
Frailty - EPI Documented	3%	3%	109	105
Cancer Care - Support Discussed	7%	6%	65	60
Admin - Next of Kin Contact Details	9%	9%	211	192
Cancer Care - Review	10%	6%	93	83
Screening - Breast Cancer Routine	14%	14%	35	35
Cancer Care - Treatments Coord	21%	21%	61	48
Admin - Carer Contact Details	33%	33%	3	2
Frailty - Status	33%	33%	3	2
HP - Weight Management & Diet Advice	42%	42%	169	63
HP - Alcohol Use Screening	43%	43%	211	119
HP - Smoking Status & Cess Advice	48%	48%	135	69
Vaccination - Flu	49%	49%	178	89
Cancer Care - Medication Review	50%	50%	211	105
Screening - Cervical Cancer Routine	54%	59%	58	27
HP - Weight and BMI Measurement	72%	72%	211	58
Screening - Bowel Cancer Routine	86%	86%	93	13
Admin - Patient Contact Details	97%	97%	211	6
Number of Primary Care Consultations	100%	100%	211	0

View Filtered Persons

Please use the cursor to select all the data on this table:

The screenshot shows the same data table from the previous image, but with a blue selection bar highlighting the entire table content, indicating that all data has been selected for copying.

The just press copy (Ctrl+C) and then paste onto the NCLCA data sheet - once pasted - then submit to the contact.

The list copies over like below (example)

X Surgery

Clinical Staff List

9,262 Persons
56% Complete

Quality Score

48.02%

Cancer Care - General Practice

All Registries Adult Diabetes Atrial Fibrillation Cancer Care - General Practice
 Chronic Obstructive Pulmonary Disease Learning Disability Severe Mental Illness
 and Physical Health

Met %

Met % Completion %



[Zoom out](#)

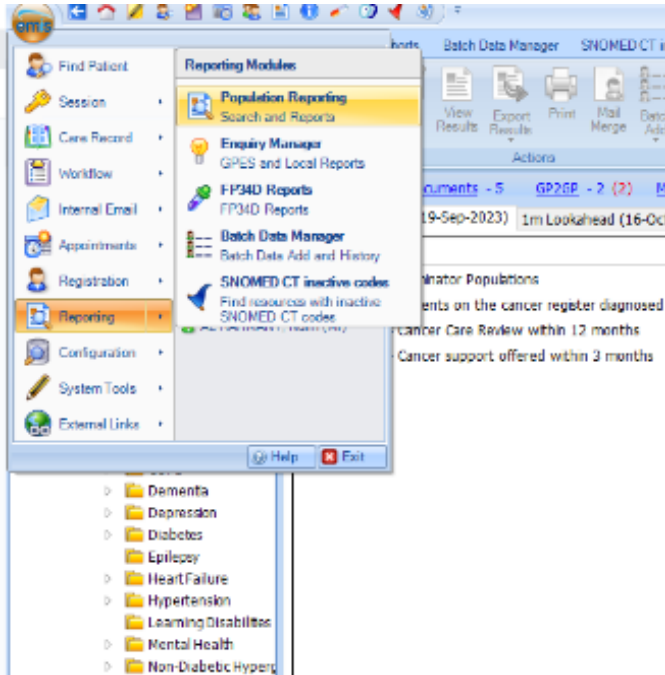
Measure	Met %	Completion %	Persons/Events Qualified	Persons/Events Not Met
Cancer Care - Plan	0%	0%	93	93
Cancer Care - End of Treatment Sum.	0%	0%	188	188
HP - Alcohol Use Intervention	0%	0%	9	9
Cancer Care - Comprehensive Review	0%	0%	93	93
Depression and Anxiety Screening	0%	0%	172	171
Cancer Care - Advance Care Plan	0%	0%	211	209
Cancer Care - Holistic Needs Assmnt.	1%	1%	93	92
Frailty - EFI Documented	3%	3%	109	105
Cancer Care - Support Discussed	7%	0%	65	60

Admin - Next of Kin Contact Details	9%	9%	211	192
Cancer Care - Review	10%	0%	93	83
Screening - Breast Cancer Routine	14%	14%	35	30
Cancer Care -Treatments Coded	21%	21%	61	48
Admin - Carer Contact Details	33%	33%	3	2
Frailty - Status	33%	33%	3	2
HP - Weight Management & Diet Advice	42%	42%	109	63
HP - Alcohol Use Screening	43%	43%	211	119
HP - Smoking Status & Cess. Advice	48%	48%	135	69
Vaccination - Flu	49%	49%	176	89
Cancer Care - Medication Review	50%	50%	211	105
Screening - Cervical Cancer Routine	54%	59%	59	27
HP - Weight and BMI Measurement	72%	72%	211	58
Screening - Bowel Cancer Routine	86%	86%	93	13
Admin - Patient Contact Details	97%	97%	211	6

Number of Primary Care Consultations	100	100%	211	0
--------------------------------------	-----	------	-----	---

How to submit your data on your cancer QOF numbers:

Go to 'reporting' section in EMIS Web and click on 'Population reporting'



Then select 'GP contract QOF' and go to your cancer folder.

GP Contract - QOF						
How Am I Driving? (19-Sep-2023) 1m Lookahead (16-Oct-2023) 3m Lookahead (17-Dec-2023) End of QMAS Year (31-Mar-2024)						
Name	Population Count	%	Target %	Points	Last Run	
Cancer Denominator Populations						
CAN001 - Patients on the cancer register diagnosed on o...	152	2%	0%	5/5	20-Sep-2023	
CAN004 - Cancer Care Review within 12 months	12	86%	90%	5.36/6	20-Sep-2023	
CAN005 - Cancer support offered within 3 months	12	55%	90%	0/2	20-Sep-2023	

Details	Definition	Age / Sex	Trend	Population Included	Population Excluded
No report					

Please now take a 'screenshot' or 'snip' of the numbers and paste on the data submission sheet.

APPENDIX:

Snomed codes - QOF cancer

- Malignant neoplastic disease (disorder) - SCTID: 363346000
- Cancer care review (procedure) - SCTID: 720006006
- Provision of information about cancer support services available in primary care (procedure) - SCTID: 1239881000000109